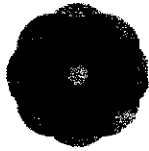


5000 Poppies



BLACK CENTRE - FALLEN DIGGERS
BLUE CENTRE - RETURNED DIGGERS
WHITE CENTRE - NURSES
PURPLE CENTRE - WAR ANIMALS

A. Ing's Hybrid Hybrid Front Post Crochet Poppy TURASS

Black and red 8 ply (dk) yarn

3.50mm crochet hook, Scissors, Darning needle, Decorative button if required

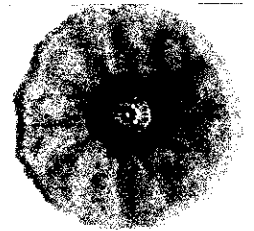
This poppy can be started with either a Magic Ring or the more traditional chain start.

Using BLACK yarn, attach yarn to hook with a slip knot. Make 4 chain and join with a sl st to form a circle OR work round 1 over a magic ring - whichever is your chosen method.

Round 1 : 3 ch (counts as the first treble), 11 treble into the ring. Join with a sl st to the 3rd ch. 12 treble. Fasten off black yarn.

Round 2 : Using RED yarn join into the top of any treble from round 1. Chain 3 (first treble), into same space as ch 3 work 1 treble, *work 2 trebles into each stitch* around and join with a sl st. 24 trebles.

Round 3 : Ch 2 (first half treble) *work 2 (or 3 if you want a more pronounced frill) front post trebles around the next stitch from round 2, work 1 half treble into the top of the same stitch and the next one* repeat around and join with a sl st. Fasten off, darn in all ends, attach button if preferred and attach pin to back.



B. Lynn's Three Row Easy Crochet Poppy

Black and red 8 ply (dk) yarn

3.50mm crochet hook, Scissors, darning needle, decorative button

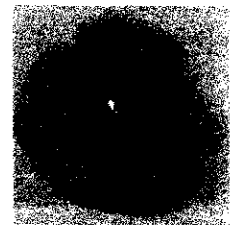
This poppy can be started with either a Magic Ring or the more traditional chain start.

Using BLACK yarn, attach yarn to hook with a slip knot. Make 4 chain and join with a sl st to form a circle OR work round 1 over a magic ring - whichever is your chosen method.

Round 1 : 3 ch (counts as the first treble), 11 treble into the ring. Join with a sl st to the 3rd ch. 12 treble. Fasten off black yarn.

Round 2 : Using RED yarn join into the top of any treble from round 1. Chain 3 (first treble), into same space as ch 3 work 3 trebles, *work 4 trebles into each stitch* around and join with a sl st. 48 trebles.

Round 3 : Ch 3 and **work 2 trebles into the next stitch. Repeat from ** to end of round and join with a sl st. Fasten off, darn in all ends, attach button if preferred and attach pin to back.



C. Lynn's Easy Knitted Garter Stitch Poppy

Black and red 8 ply (dk) yarn

3.75 needles depending on how tight your knitting is. Scissors, Darning needle, Decorative button if required

Cast on 70 stitches

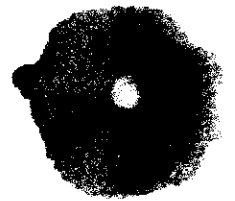
Row 1-6 : Knit (You can knit 8 rows if your tension is tight or you are using a smaller ply yarn)

Row 7 : *slip 1, knit 2 tog, pssso Repeat from * across row. If there is an odd stitch remaining knit.

Row 8-9 : knit 2 tog across row.

Cut yarn and thread through remaining stitches and pull up to form poppy. Stitch side seam and attach centre.

NB last three rows can be done in black yarn to form centre, but a button works equally well. Attach pin to back.



D. Lynn's Easy Knitted Rib Stitch Poppy

Black and red 8 ply (dk) yarn

3.75 needles depending on how tight your knitting is. Scissors, Darning needle, Decorative button if required

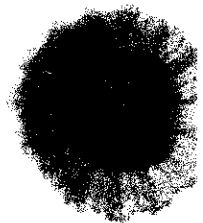
Cast on 52 stitches

Row 1-8 : rows in 2 x 2 rib

Row 9-11 : knit 2 tog across row. Where there is an odd number of stitches knit last stitch.

Cut yarn and thread through remaining stitches and pull up to form poppy. Stitch side seam and attach centre.

NB last three rows can be done in black yarn to form centre, but a knitted centre or button works equally well. Attach pin to back.



Poppies can be dropped at any of the Yarra Plenty Regional Libraries

Or sent to 5000 Poppies, P.O. Box 115, Ashburton Vic 3147 or RSL Vic, Anzac House, Collins St, Melbourne 3000

Blog : 5000poppies.wordpress.com

Facebook : 5000 Poppies



Lynn's Easy Crochet Pattern

This pattern gives a full crochet poppy using only one size stitch, and is an easy pattern for beginners.

Size 3.5 crochet hook (we want the finished flower to be quite tight)

Col A 1 ball red 8 ply yarn (one ball will make a number of poppies)

Col B Scrap of green 8 ply yarn

Col C Scrap of black 8 ply yarn (eyelash yarn looks great)

BODY OF POPPY

Using Col A make a slip ring

1st round Ch 3, 9 treble crochet into ring. Pull the slip ring tight to close centre of ring and slip stitch in top ch to join

2nd round Ch 3, 1 treble crochet into first stitch 2 treble crochet into each stitch to last stitch, slip stitch in top ch to join

3rd round Ch 3, 2 treble crochet into first stitch, 3 treble crochet into each stitch to last stitch, slip stitch in top ch to join

4th round Ch 3, 1 treble into first stitch, 7 treble into each stitch to last stitch, slip stitch in top ch to join. Fasten off and sew in ends

CENTRE OF POPPY

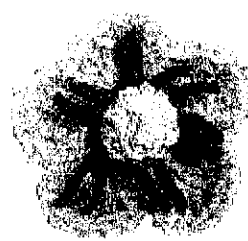
Using Col B Make slip ring Ch 3, 9 treble crochet into ring. Pull end to close centre of ring and slip stitch in top ch to join. Fasten off and sew in ends

Using Col C Join yarn into edge of circle on RS and Ch 1 + 1 double crochet into first stitch, 1 ch ... repeat from * to end of round and slip stitch to join. Fasten off leaving a long tail to attach centre to body of poppy.

FINISHING

Sew in ends for body of poppy. The ends for the centre can be sewn in if you wish or hide them behind when you sew on the centre. Using a yarn needle thread black tail and invisibly attach the centre to the body of the poppy.

Start again



Lorraine's Easier Crochet Pattern

This design is only two rounds using treble and triple treble (yoh 3 times before inserting).

Size 3.5 crochet hook

Col A 1 ball red 8 ply yarn (one ball will make many poppies)

Col B Scrap of green 8 ply yarn

Col C Scrap of black 8 ply yarn

BODY OF POPPY

Using Col A make a slip ring

1st round Ch 3, 9 treble crochet into ring. Pull the slip ring tight to close centre of ring and slip stitch in top ch to join

2nd round 3tr, 4tr in same stitch. In next stitch 5tr. *in next stitch 1tr and 4tr, in next stitch 5tr. REPEAT from * to end of round, ending with slip st in top to join. Fasten off. Sew in ends.

CENTRE OF POPPY

Using Col B Make slip ring Ch 3, 9 treble crochet into ring and slip stitch in top ch to join. Pull tail end to close centre of ring. Fasten off leaving long tail to attach centre to body of poppy.

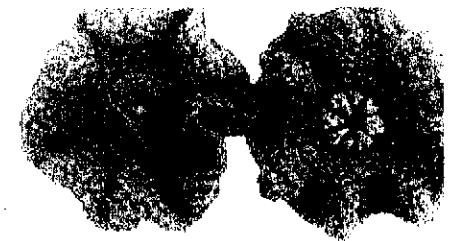
FINISHING

Using Col C Cut 6 x 7cm lengths of yarn and using a small hook attach them like a fringe to the post of each stitch on Round 1. Stich centre to body of poppy.

NOTES

The petals are made up of 5 groups of 10 stitches worked over 2 trebles of the first round.

Start again



Lynn's Easy Knitted Poppy

This easy knit pattern gives a lovely fit to your poppy.

Size 3.5 mm knitting needles (we want the finished fit quite tight)

Col A 1 ball red 8 ply yarn (one ball will make many poppies)

Col B Scrap of green 8 ply yarn

Col C Scrap of black 8 ply yarn

BODY OF POPPY

Using Col A cast on 120 stitches.

Rows 1-4 Knit

Row 5 Slip 1 Knit 2 together PSSD across the row (4)

Rows 6-9 Knit

Row 10 Knit 2 tog across the row (20 stitches)

Rows 11-14 Knit

Row 15 Knit 2 together across the row (10 stitches)

Cut yarn leaving a tail of about 15cm

Thread tail through yarn needle and slip all the rem: onto the yarn tail and pull tight. Pull around into a c mattress stitch seam for an invisible seam.

CENTRE OF POPPY

Using Col B Cast on 8 stitches and knit a square (any stocking stitch. Cut yarn leaving a tail and thread th as previously. The purl side is the right side. Run a lt around the outside of the knitted square and ease e edges of the square into a round and tuck under.

FINISHING

Stitch the centre tucked side down to body of poppy with black yarn as shown, or alternatively use a blk Sew in ends.

Start again

